

M A K E S P A C E

MAKESPACE ARCHITECTS
2nd Floor, DSC Centre
69 Memorial Road
Kimberley 8301
www.makespace.co.za

COMPANY PROFILE

2023



Table of Contents

04	Company Information
05	Office Philosophy
06	Single Residential
08	Commercial and Hospitality
10	Educational and Community
12	Multi Residential
13	Conceptual Work
14	Studio

Company Information

Company Name Makespace Architects (Pty) Ltd.

Registration Number 2014 / 158000 / 07

VAT Number 4310267226

B-BBEE Contributor Level 1

Contact Information www.makespace.co.za

chris@makespace.co.za

083 775 8965

george@makespace.co.za

084 230 7093

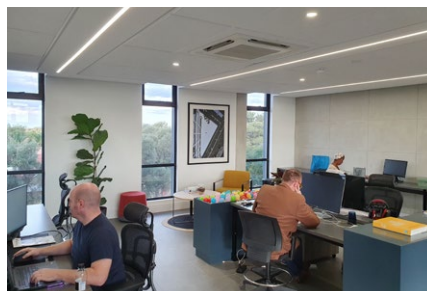
wagener@makespace.co.za

082 672 1088



Head Office

2nd Floor / DSC Centre / 69 Memorial Road / Kimberley / 8301



Office Philosophy

Creating the building of your dreams involves synchronizing a multitude of components perfectly. Imagination, vision and technical expertise combined with a can-do attitude that welcomes any challenge with grit and integrity. This is the Makespace difference.

Mission Statement

Makespace is an architectural practice that aims to deliver an innovative and dedicated approach to all aspects of design in the building industry. We aim to deliver a contemporary and enthusiastic approach to the execution of buildings bringing bespoke solutions to the unique requirements of each and every project and its client's needs while fulfilling our mission to strive towards excellence in the building industry. We believe that vested in Makespace Architects, is the drive and spirit of a new generation.

Company Vision

We are dedicated to executing our clients' toughest infrastructure and natural resource challenges with optimism and imagination. By building trusted relationships, we partner with governments, communities, businesses, organizations and individuals across South Africa to ensure bespoke and innovative design solutions. Makespace Architects sees design as strategy in action, focussed on results.

Goals and Objectives

Honesty & Integrity.

Harmonious liaisons with an excellent and experienced professional team.

Dedicate our efforts to consistently deliver a product of the highest quality.

To improve the quality of life of all people we come into contact with, clients, consultants, staff and beneficiaries.

Field of Expertise

- Architectural design
- 3D modelling and rendering
- Design proposals and client presentations
- Client and professional team relations
- Technical resolution and design development
- Working with the latest in cutting edge technology in innovative design solutions
- General tender, contract and construction documentation
- Contract and construction management and contract administration

Selected Work



Single Residential

House Visicale / House Shoane / House Brider / House Pitso / Carrington Loft
House Kgantsi / House Faber / 46A Carrington / House Victor / House De Witt
House Muller / House Ford / House Van Staaden / House Greyling / House Voigt
House Van Der Merwe / House Hattingh / House Harris / House Van Der Walt
House Wolmerans / House Morolong / House Coetzer / House Langeveldt

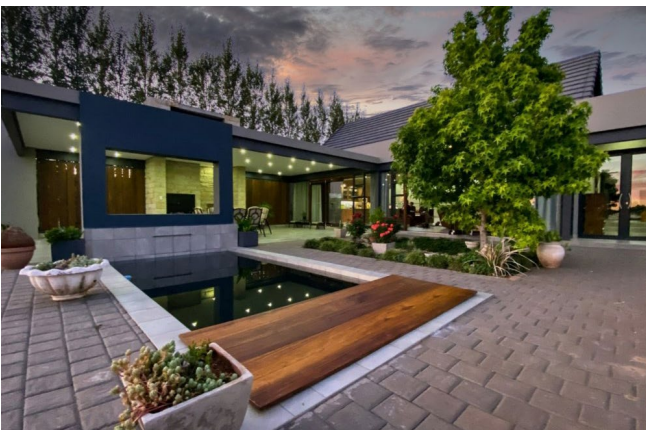
Carrington Loft

The design intent for this summer house in suburbia, combines interior simplicity with Scandinavian cottage traditions.





House Mabuya / House Pitsoe / House Fanele / House Mogoro / House Cotzee
House Nel / HousePotgieter / House Vorster / House Seeco / House Mguza
House Van Zyl / House Meyer / House Gant / House Loots / House Jordaan
House Zeeman / House Oehley / House Phuti / House Spangenberg
House Hancke / 47 Carrington / House Marabe / House Molewa / 42 Carrington



Selected Work



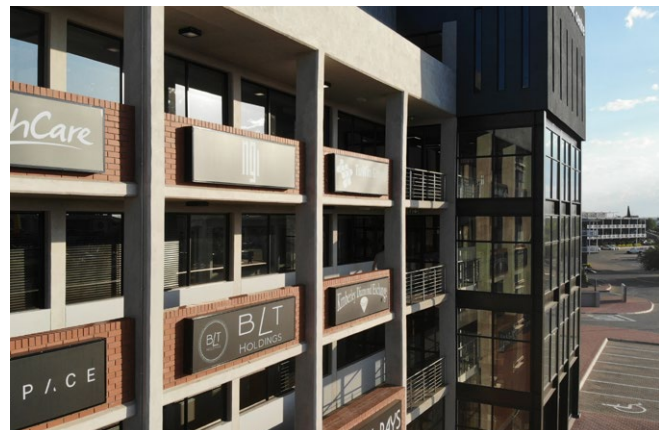
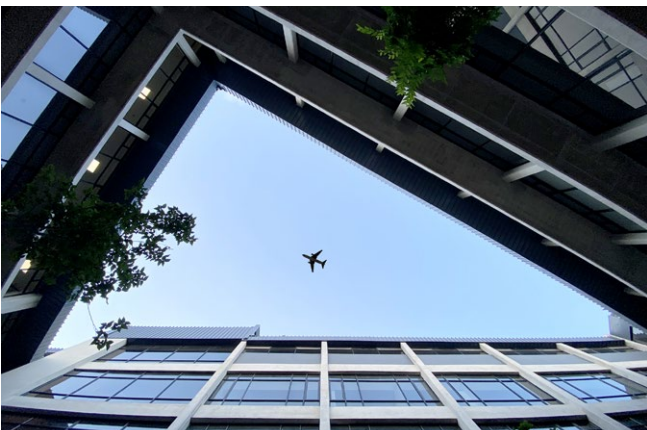
Commercial and Hospitality

DSC Centre / Silver Bull Guest House / DSAC Provincial Offices / Louise Rame Oleander Guest House / Laurier Blanc Restaurant / CPS Offices / DSC Office Block
Purple Steps Guest House / IEC Local Offices / Riviera Spar Shopping Complex
Bemat Retail Block / Helcon Hydraulics / N12 Filling Station & Truck Stop / APD Offices





We place a great deal of emphasis on the materiality in our designs. It is the way in which ideas are translated into built form - informing the multi-layered relationship between the building and its occupants.



Selected Work



Educational and Community

DSAC Provincial Library Depot / Deben Community Hall / Sishen ECD Classrooms
Postmasburg Community Market Stalls / Groblershoop Love Life Youth Center
Galeshewe Community Theater / NGK Harmonie Youth Center / Learamele School
Dining Hall+Kitchen / IDT Cluster 1 Upgrades and Additions to various Schools

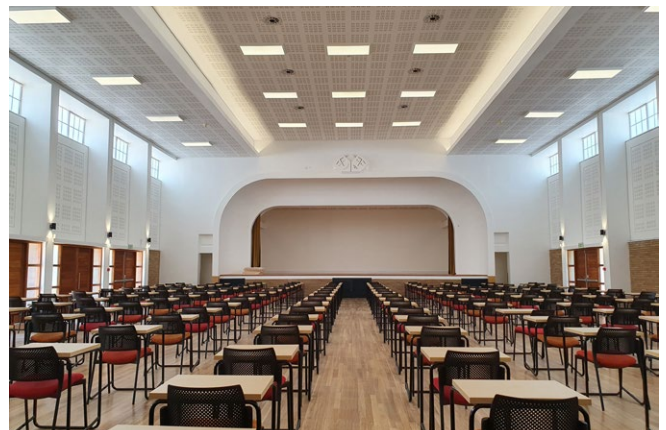
SPU Sports Pavilion

The building stands as a pavilion amongst the sports facilities, but embraces and responds to the surrounding form and landscapes.





Sol Plaatje University (in collaboration with Cohen and Garson Architects):
Mult-purpose Hall / Staff Recreation Building / Maroko Dining Hall
South Campus Sports Pavilion and Change Rooms / Tauana Warden's Apartment
Maroko Warden's Apartments / Central Campus Sports Pavilion and Change Rooms



Selected Work

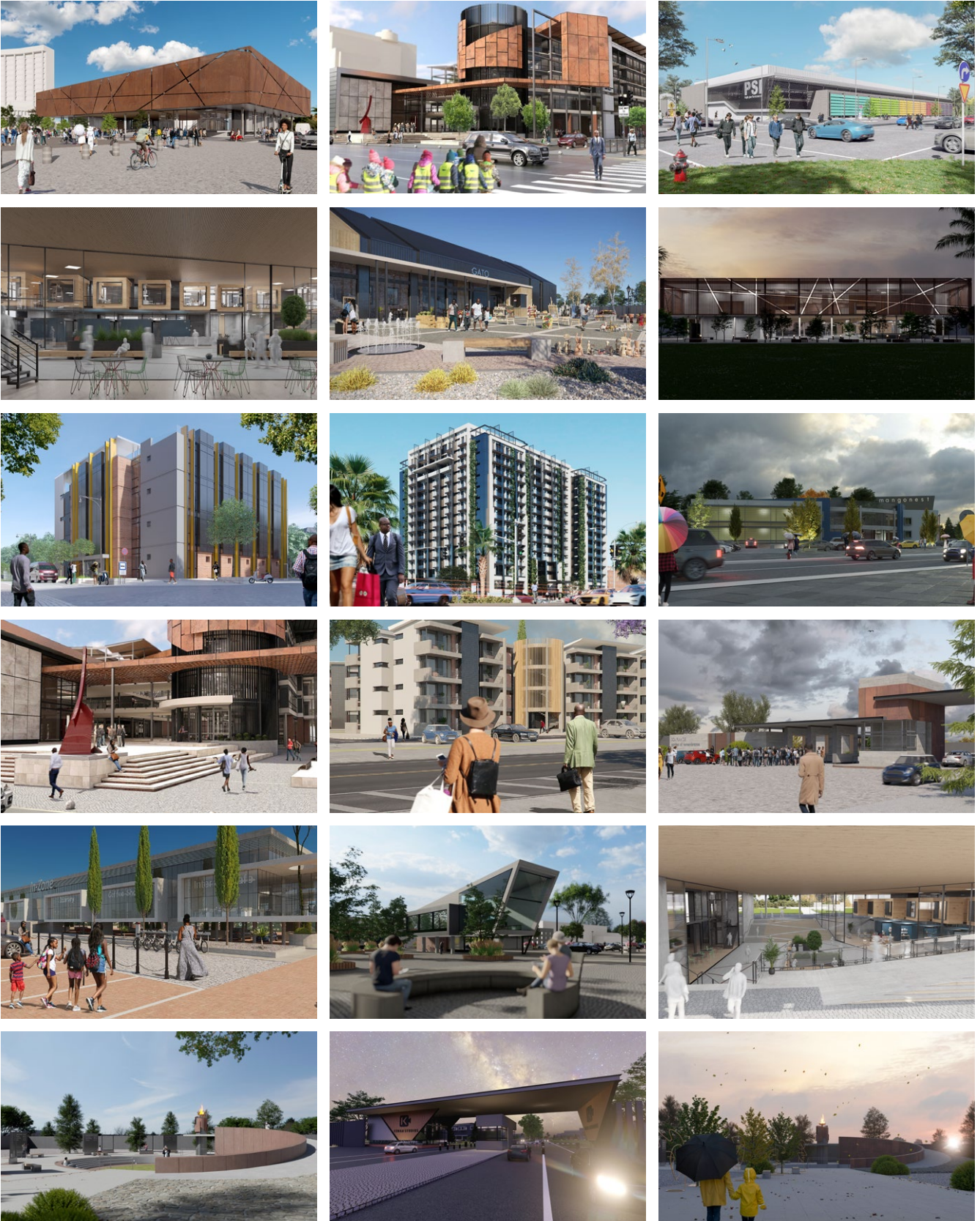


Multi Residential

Custom Street Apartments / Lyndhurst Apartments / Supreme Student Housing
AfriKhaya Social Housing Development / Sea of Mountains Student Residence
Magersfontein The Village Townhouse Development / Kings Centre Apartments
Zanathi Student Nest / Ntabiseng Court Student Residence / Aderley Street CPT



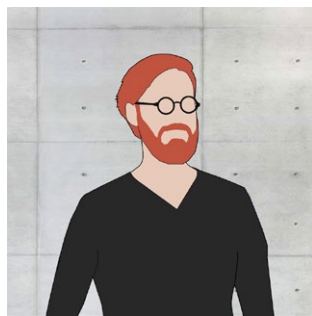
Conceptual Work



Our Team



Ntuthu Mabenge
COO



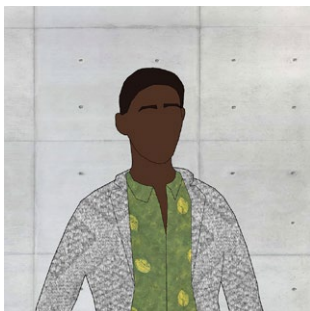
Wagener Hancke
/ director /
Architect



Chris Langeveldt
/ director /
CGI Artist



George Schoonraad
/ director /
Architect



Thembi Lepesa
Architect



Hein Raubenheimer
Architect

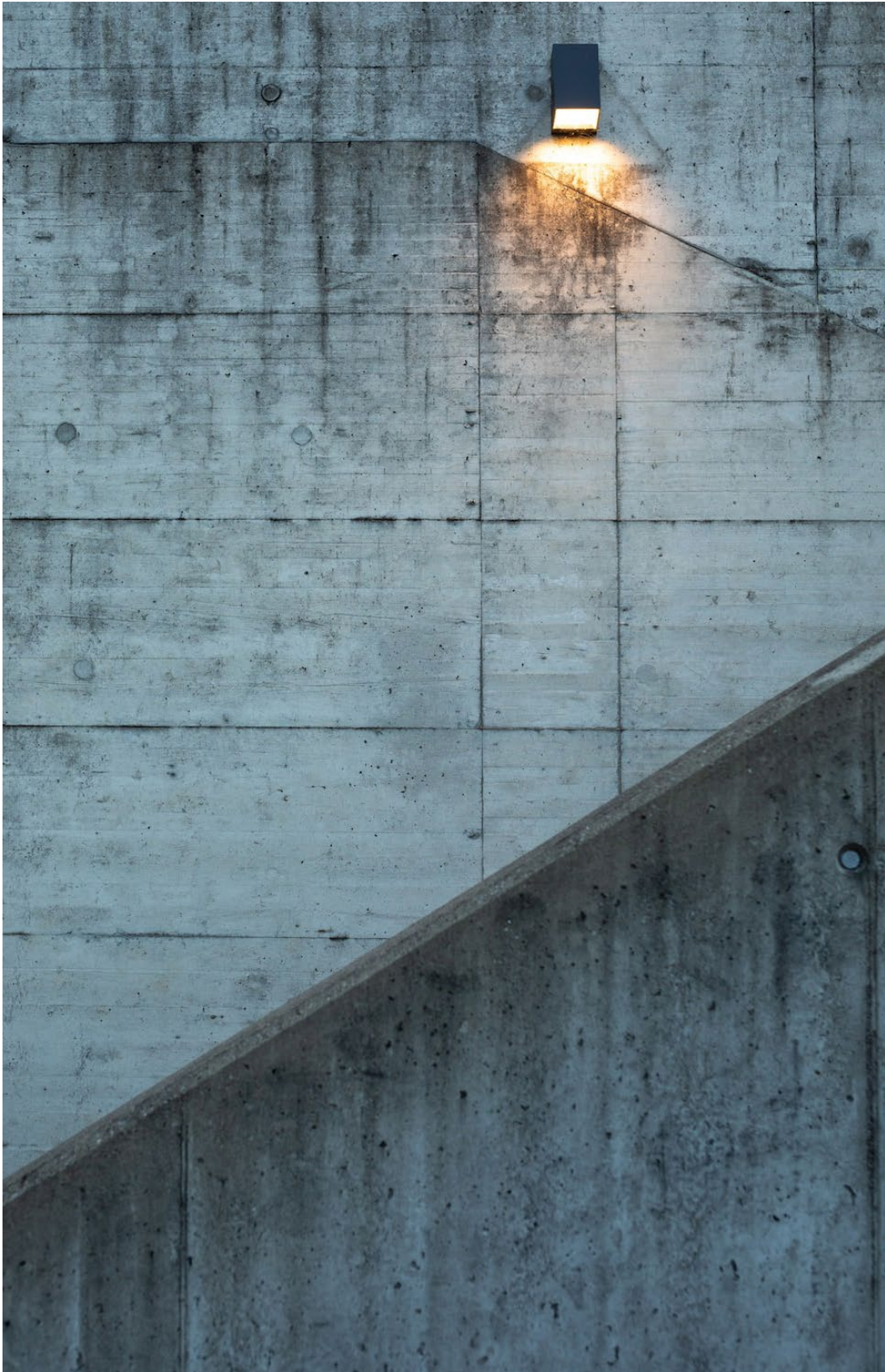


Bonakelo Mothei
Quantity Surveyor



Tristan Titus
Technologist







M A K E S P / A C E



MAKESPACE ARCHITECTS

2nd Floor, DSC Centre
69 Memorial Road
Kimberley 8301
www.makespace.co.za